



2 Lewis Street Appin, NSW



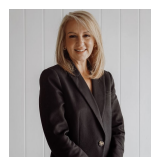
Prime 1,069sqm parcel of land

Set on a desirable corner block, this home provides magnificent opportunity to secure a prime 1069sqm parcel located in the heart of Appin. This home maximises both space and practicality with side access packed with original charm and offers a fantastic opportunity for investors, developers and first home buyers alike.

- Three bedrooms with built-in robes to all bedrooms
- Showcasing open plan lounge and dining rooms flowing seamlessly to a spacious sunroom dining room plus a family room flowing seamless into the outdoor entertaining area
- Generous kitchen with ample bench space, gas cooking appliances, rangehood and pantry
- Centrally located family bathroom and a separate w/c, internal laundry adjoining the patio area, second w/c
- Split system air conditioning to living and sunroom
- Conveniently located just 30 minutes to Wollongong's beaches and only 15 minutes to Campbelltown's CBD, train station, this is a pri

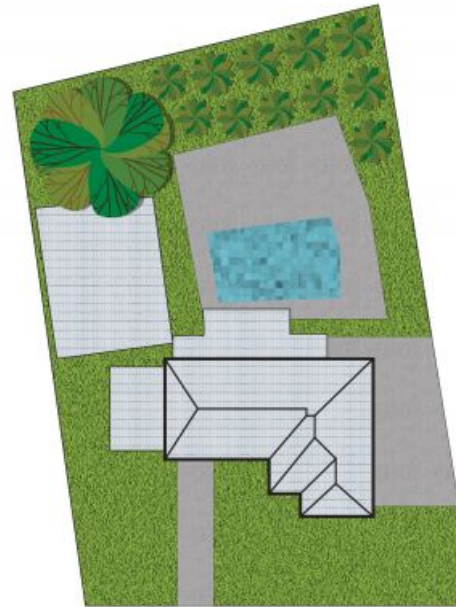
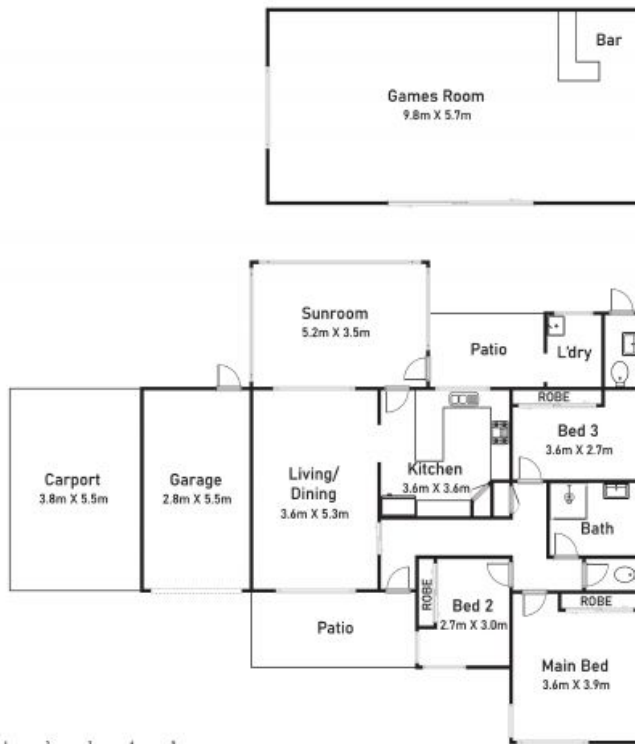
For more details please visit <https://www.gyproperty.com.au/8686050>

Inspect: Saturday, 16th May 2026 11:15 - 11:45



Anna Younan

0416 053 838



0 1 2 3 4 5 SCALE (METRES)

Scale in metres. Indicative only. All information contained herein is obtained from sources we believe to be accurate. We cannot guarantee its accuracy. Interested persons should make and rely on their own enquiries.

2 Lewis St, Appin NSW 2560



2 Lewis Street, Appin, NSW

