



265 Wilton Park Road WILTON, NSW



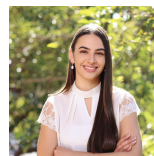
Stunning rural property perfect for Primary Production Business

Set on some of the best 26 acres on land in the area with extensive rural views, this property presents an opportunity to enjoy quiet rural living with the convenience of M5 access and a short distance to the local town ship of Picton.

The property consists of a beautiful family home with endless features, surrounded by rolling acres.

- Four Bedrooms with sliding mirrored robes and rural views
- Beautiful bathroom with floor to ceiling tiles and high quality finishes
- Oversized family room large enough to fit a kids play area
- Dining room
- Stunning kitchen with stone bench top and high quality appliances
- Large Veranda looking out over the land
- 90,000 litre water tank

For more details please visit <https://www.gyproperty.com.au/8202484>



Emily Fenech

0401 287 878