



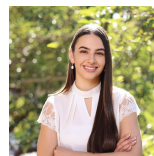
17 Fairbank Drive GLEDSWOOD HILLS, NSW



Built with quality and sustainability in mind

Luxury, quality and impeccable design are the hallmarks of this Shawwood terrace home and beautifully positioned in 'The Hermitage'. This home is tucked away from the road, with bus stop on the doorstep and convenient walk to Gledswood Hills Public School and the Country Club.

- Three bedrooms with built-in robes, ensuite to master suite
- Bright open plan living areas flow seamlessly to backyard
- Versatile layout with a dedicated lounge to the front of the home
- Sleek and modern kitchen with stone benchtops and quality appliances
- Split system air conditioning to living space and master bedroom upstairs
- European style laundry and downstairs w/c
- Ample storage on both levels
- Stunning family bathroom and ensuite with floor to ceiling tiles
- Stunning landscaped front yard and easy to maintain rear yard

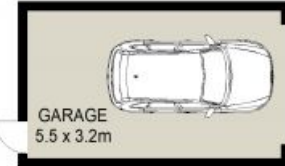


Emily Fenech

0401 287 878



SITE PLAN (NOT TO SCALE)



GARAGE
5.5 x 3.2m



LOWER LEVEL



UPPER LEVEL



Scale in metres, indicative only. All information contained herein is obtained from sources we believe to be accurate, we cannot guarantee its accuracy. Interested persons should make and rely on their own enquiries.

17 Fairbank Drive, Gledswood Hills



17 Fairbank Drive, GLEDSWOOD HILLS, NSW

