



101-103 Menangle Street Picton, NSW



A new standard of contemporary living in Picton with a choice of 3 & 4 bedroom h

- Within an exclusive enclave of only 51 residences and surrounded by parklands, creek-side reserves and a vibrant community, these homes epitomise contemporary country living. The masterplan estate carefully considers both privacy and community, with space between town homes and a staggered form to give each residence its own sense of identity.
- Treasured for its flora and greenery, this community offers an ever-present sense of tranquillity and sanctuary. With parklands on one side and Menangle Street on the other.
- A collection of large-scale townhomes thoughtfully designed with a selection of floorplans within the lush landscapes.
- The focal point of your home, your kitchen has been designed with not only practicality in mind but with an emphasis on style
- A celebration of tradition, impressive dining areas further provide space to entertain your guests and family.
- The bathrooms offer a beautiful, tactile experience, a pleasure to feel and touch. Natural timber vanities combined with full-height



Anna Younan

0416 053 838

For more details please visit <https://www.gyproperty.com.au/7986576>

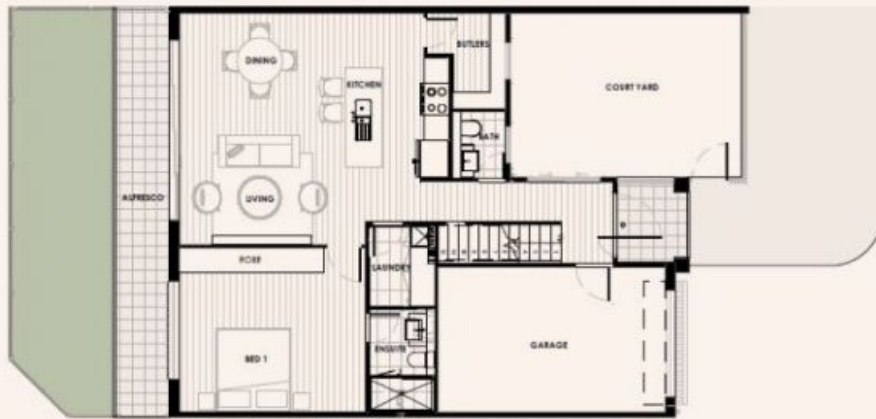
www.gyproperty.com.au

PH: 02 4648 4058 | FAX: 02 4648 4059

1/125 Argyle Street, Camden, NSW 2570



First Floor



Ground Floor

