



Disclaimer: Dimensions are approximate and should only be used as a guide. All information contained herein is gathered from sources we believe to be reliable. However, we cannot guarantee its accuracy and interested parties should rely on their own enquiries.



16 Bradninch Crescent Wilton, NSW



### Brand New Home in Wilton Green Estate

Set within the sought-after in the Wilton Green Estate in Wilton and amongst other quality homes; this brand new, ready to move in, home exudes quality and charm. Single level design offering an excellent opportunity for a first home buyer and an astute investor.

- Three bedrooms, master with ensuite and walk-in robe, built-in robes to two bedrooms
- Beautiful ensuite and family bathroom with neutral tones throughout
- Well appointed kitchen with stone benchtops, walk-pantry, rangehood and gas cooking
- Open plan living and dining area flows seamlessly into the backyard
- Single remote-control garage with internal access to the home
- Ducted air conditioning for all year round comfort
- Secure and low maintenance backyard mainly laid with lawns
- An ideal first home or an investment property in a sought-after suburb
- Close to schools, golf course, Hume Motorway and shopping

For more details please visit <https://www.gyproperty.com.au/7971655>



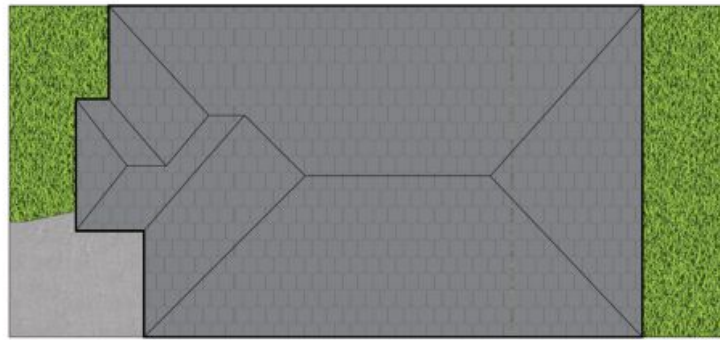
**Anna Younan**

0416 053 838



**April Fetesio**

0460 761 300



0 1 2 3 4 5 SCALE (METRES)



Scale in metres. Indicative only. All information contained herein is obtained from sources we believe to be accurate, we cannot guarantee its accuracy. Interested persons should make and rely on their own enquiries.

## 16 Bradninch Cres, Wilton NSW 2571



16 Bradninch Crescent, Wilton, NSW

