



32 Marshall Avenue SPRING FARM, NSW

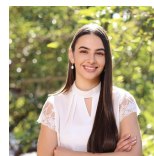


Convenient Low Maintenance Living

Positioned moments from major access roads such as the Camden Bypass and the future access to the M5, this three bedroom home provides low maintenance living with all of the creature comforts needed in a home.

- Three good sized bedrooms all with built in robes
- The main bedroom features a walk in robe and ensuite
- Main bathroom with floor to ceiling tiles and free standing bath
- Light filled open plan meals and family area
- Well appointed kitchen with stainless steel appliances and stone bench tops
- Internal access to the double remote garage
- Ducted air conditioning, low maintenance gardens and moments from locals schools, shops and public transport

For more details please visit <https://www.gyproperty.com.au/7880734>



Emily Fenech

0401 287 878

