



25 Bartholomew Way BRAEMAR, NSW

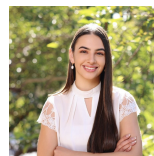


Spacious 4 bedroom home

An ideal mix of contemporary design with easy care living, this four bedroom home offers a flowing floor plan complimented by neutral colour tones and double glazed windows. Set within the growing estate of Nattai Ponds, this home is close to all amenities.

- Stunning home with attractive street appeal
- Four bedrooms with ensuite and walk in robe to master
- Large open plan living options with additional media room
- Sleek stainless steel kitchen with walk in pantry
- Alfresco area, perfect for entertaining year round
- Double glazed windows, assists with noise and temperature
- Ducted air conditioning, natural gas and NBN
- Fully fenced rear yard, landscaped gardens

For more details please visit <https://www.gyproperty.com.au/7838457>



Emily Fenech

0401 287 878