



55 Franzman Avenue ELDERSLIE, NSW

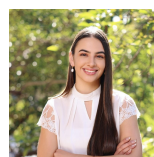
4 2

Family home with the perfect balance between practical and luxury living

Occupying a peaceful position that overlooks parks and open fields, this custom built family home is the perfect balance between practical and luxury living. Well appointed bedrooms, light filled living areas, a private backyard and external maintenance included, this home allows you to spend more time enjoying life.

Features include

- Four bedrooms with built in robes
- Main bedroom boasting a walk in robe, large balcony and oversized ensuite with free standing bath
- Open Plan Family and Dining Room with hybrid flooring
- Beautiful kitchen with stone bench tops, stainless steel appliances and walk in pantry
- Ample storage to both levels
- Private yard with undercover area and rear



Emily Fenech

0401 287 878

For more details please visit <https://www.gyproperty.com.au/7820037>

www.gyproperty.com.au

PH: 02 4648 4058 | FAX: 02 4648 4059

1/125 Argyle Street, Camden, NSW 2570