



43a Withnell Crescent ST HELENS PARK, NSW

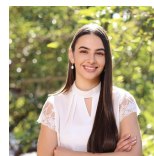


A cozy, comfortable, and convenient place to call home.

Located on a quiet street of St Helens Park, this is the perfect opportunity to experience comfortable living in a beautiful suburban setting. Close to many schools and child care facilities, park reserves and easy access to transport this property has so much to offer.

Some property features include:

- 3 Bedrooms
- 1 Key lockup garage space
- Separate lounge and dining room
- Carpet throughout
- Split system air conditioner
- A spacious backyard



Emily Fenech

0401 287 878