



568/72 Glendower Street Gilead, NSW



### Facing Mount Gilead's private Golf course and rolling green pasture

This bright, exquisitely appointed villa reflects contemporary sophistication, spacious and stylish. Facing Mount Gilead's private golf course, this ground-level layout is brimming with thoughtful inclusions, and high-quality, hotel-style touches at every turn. Perfect for those who love to entertain indoors or out. Beautiful Mount Gilead Estate boasts unparalleled elegance and eminence as a luxury, resort-style haven for over 55s.

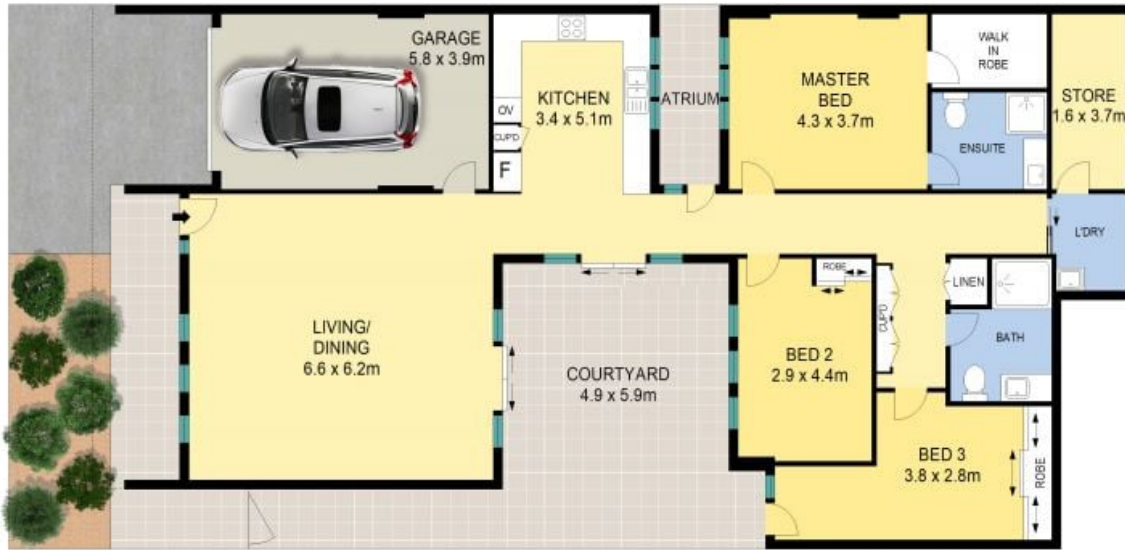
- Superb master suite with walk-in robe and ensuite
- Two additional, light-filled bedrooms with built-in robes
- Extra bathroom, streamlined palette plus an excellent size laundry
- Gourmet kitchen with stone benchtops, premium appliances, splashbacks, soft-closing doors and drawers and ample storage
- Extra courtyard garden infuses the home with a calming dose of zen
- Ducted, reverse-cycle air-conditioning

Magnificent Clubhouse with an array of entertainment and health facilities including heated indoor swimming



**Joanne Cairns**

0401 878 854



GARDEN LEVEL



Scale in metres. Indicative only. All information contained herein is obtained from sources we believe to be accurate, we cannot guarantee its accuracy. Interested persons should make and rely on their own enquiries.

568/72 Glendower Street, Gilead



568/72 Glendower Street, Gilead, NSW

