

13 Sutton Crescent WILTON, NSW

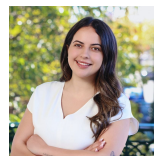


Well Presented 4 Bedroom Home

This superb 4 bedroom home. Located in the popular growing estate of Wilton Bingara Gorge, you will feel embraced by this beautiful community that has everything you need for the growing family. All bedrooms are designed perfectly allowing the rest of the home to flow through to open plan living and lounge areas. The back yard is big and ideal for entertaining. 2 driveways allowing you options on either end.

With schools, shops and recreation facilities your decision will be easy. Features include:

- Four spacious bedrooms all with built ins
- Main bedroom includes ensuite and his and hers walk in robe
- Theatre room
- Spacious living and dining areas
- Air conditioning and back to base alarm and security cameras
- Modern sleek kitchen with gas cooking appliances
- Huge back yard with wide access
- Dual Driveway and Double lock up garage wit



Claudia Vella

0466 354 940

For more details please visit <https://www.gyproperty.com.au/7736605>