

10 Danvers Road Spring Farm, NSW



### An ideal opportunity in Spring Farm

Set within one of the sought-after enclaves of Spring Farm, this single level design home offers an excellent opportunity for first home buyers, an astute investor or downsizers. Its peaceful locale is close to the M5, buses, schools, Camden village and Narellan town centre.

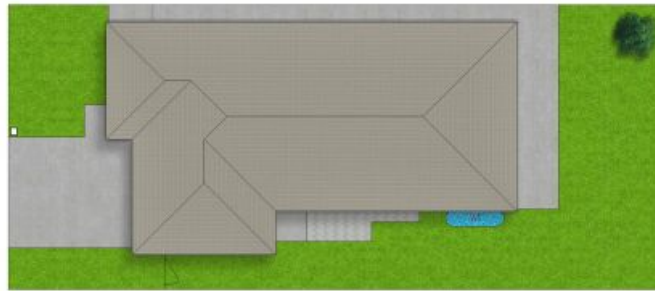
- Three bedrooms, master with ensuite and walk-in robe is located at rear of the home
- Built-in robes to two bedrooms with access to contemporary family bathroom
- Modern kitchen with stone benchtops, stainless steel appliances and pantry
- Open plan living and dining area flows seamlessly to backyard
- A dedicated lounge/media room placed to the front of the home
- Double remote-control garage with internal access, ducted air conditioning

For more details please visit <https://www.gyproperty.com.au/7705338>



**Anna Younan**

0416 053 838



SITE PLAN (NOT TO SCALE)



Scale in metres. Indicative only. All information contained herein is obtained from sources we believe to be accurate. We cannot guarantee its accuracy. Interested persons should make and rely on their own enquiries.

10 Danvers Road, Spring Farm



10 Danvers Road, Spring Farm, NSW

