

7 Callinan Crescent BARDIA, NSW



Light Filled Home

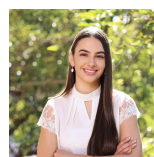
Double storey 3 bedroom duplex situated in the sought after suburb of Bardia.

This lovely home being approximately 260m to the Ingleburn Garden Pool & Playground, this estate has a great community feel.

Close to local schools, shops and public transport and only 2km from Ed Square Shopping Centre & Crossroads Homemaker Centre.

Presenting an open plan layout to the living areas and plenty of natural light. Features Include:

- ? Three good sized bedrooms with built in wardrobes
- ? Walk in wardrobe and ensuite to the master bedroom
- ? Open plan kitchen, lounge and dining room
- ? Modern kitchen with dishwasher
- ? Main bathroom upstairs with bathtub and sep



Emily Fenech

0401 287 878

For more details please visit <https://www.gyproperty.com.au/7624324>

www.gyproperty.com.au

PH: 02 4648 4058 | FAX: 02 4648 4059

1/125 Argyle Street, Camden, NSW 2570