



23A Culley Avenue Denham Court, NSW



### This Stunning Home - Now Sold

This stunning brand-new home is located in a sought-after enclave of Denham Court (Willowdale Heights). Perched proudly on an elevated block, giving you an incredible view of the Blue Mountains. This architecturally designed home is 31.7 sqm of flexible living and a fantastic family friendly floorplan, with premium inclusions. Located conveniently within a short distance from local shopping centre, restaurants, public transport, both state and private schools and just a short drive to the M5/M7 motorways. Furthermore, it is centrally located between Narellan and Liverpool CBD.

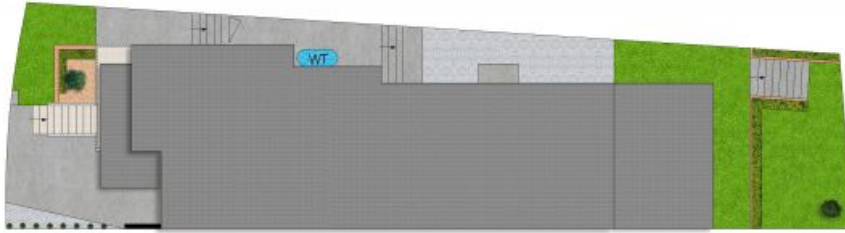
- A selection of living spaces spanning over two magnificent levels
- Sumptuous master suite with walk-in robe, built in robe and an impeccable ensuite
- Three further bedrooms, two bedrooms with built-in robes and walk-in robe to bedroom two
- A dedicated formal lounge/theatre room to the front of the home
- Daikin 18kw, 7 zoned ducted air-conditioning, ceiling fans, intercom, alarm, security cameras, intercom and bayonet for gas heating

For more details please visit <https://www.gyproperty.com.au/7537917>

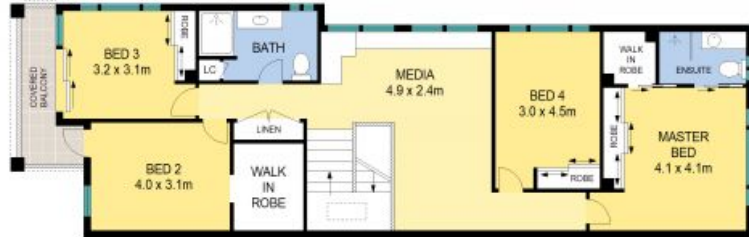


Anna Younan

0416 053 838



SITE PLAN (NOT TO SCALE)



UPPER LEVEL



LOWER LEVEL



Scale in metres. Indicative only. All information contained herein is obtained from sources we believe to be accurate, we cannot guarantee its accuracy. Interested persons should make and rely on their own enquiries.

23A Culley Avenue, Denham Court



23A Culley Avenue, Denham Court, NSW

