

10 Hoxton Place Spring Farm, NSW 4 2 2

### Brand New Home

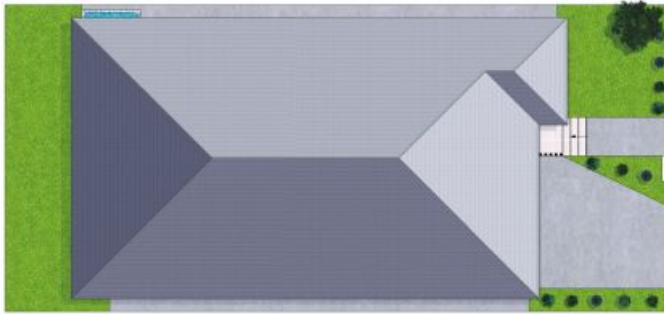
This brand-new home is beautifully located in a popular enclave of Spring Farm. Situated off Macarthur Road, Spring Farm, this home enjoys rural vistas and easy access to Camden and major arterial roads.

- Four bedrooms, master bedroom with ensuite and built-in robes to all
- Featuring soaring 3 metre ceilings throughout along with quality flooring
- Stunning chefs kitchen with 40mm stone benchtops and quality appliances
- Open plan living space flows seamlessly to undercover alfresco area
- Showcasing premium inclusion such as intercom, alarm and cameras
- Ducted air conditioning, remote double garage with internal access
- Fully landscaped and ready to be occupied
- An ideal property for an astute investor or a first home buyer
- Short drive to the historic town of Camden and the popular Narellan Town Centre

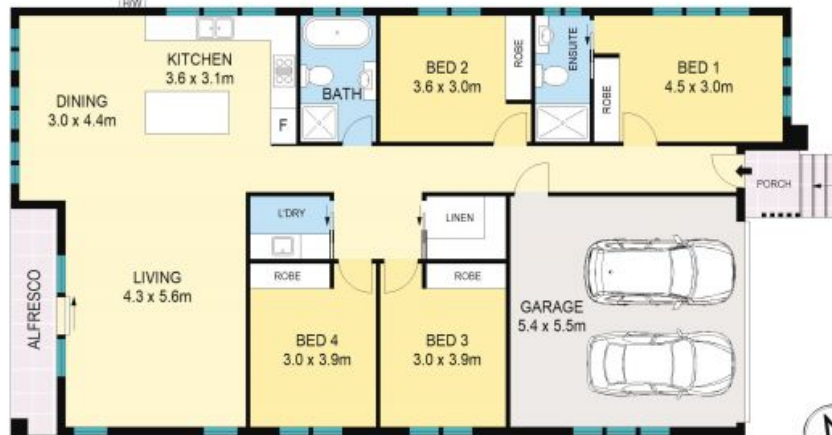


**Anna Younan**

0416 053 838



SITE PLAN (NOT TO SCALE)



0 1 2 3 4 5 SCALE (METRES)

Scale in metres. Indicative only. All information contained herein is obtained from sources we believe to be accurate. We cannot guarantee its accuracy. Interested persons should make and rely on their own enquiries.

10 Hoxton Place, Spring Farm



10 Hoxton Place, Spring Farm, NSW

