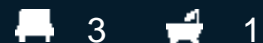




5 Traminer Place ESCHOL PARK, NSW

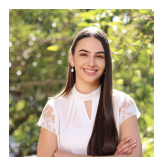


## Modern 3 Bedroom Home

This 3 bedroom brick home situated on the high side of the street with elevated outlook offers a modern kitchen, adjoining meals area and separate lounge room all finished with lovely modern floating timber floors. All bedrooms have carpet & built-ins to them. The backyard offers low maintenance living with a timber deck great for entertaining. In a central position close to all amenities and only a couple minutes to the M5 on ramp. This home is ready to move in before Christmas !

\* Disclaimer we wish to advise there is a granny flat to the rear of the property which is leased out separately\*

For more details please visit <https://www.gyproperty.com.au/7298885>



**Emily Fenech**

0401 287 878