






13 Gardiner Crescent Elderslie, NSW  4  2  2

When location matters, we offer an ideal home for a growing family

Located in sought after Elderslie, this neat and tidy home offers an ideal opportunity for a growing family. Sitting amongst the best schools in the area, we are located close to local primary and high schools, moments away from Camden Golf Club and a short drive to Camden CBD.

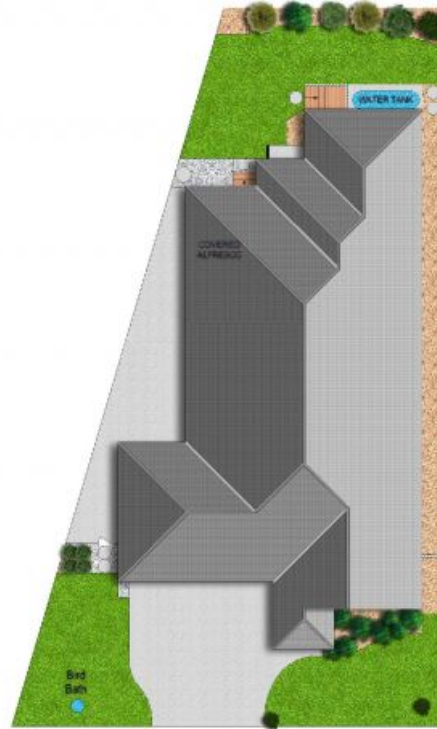
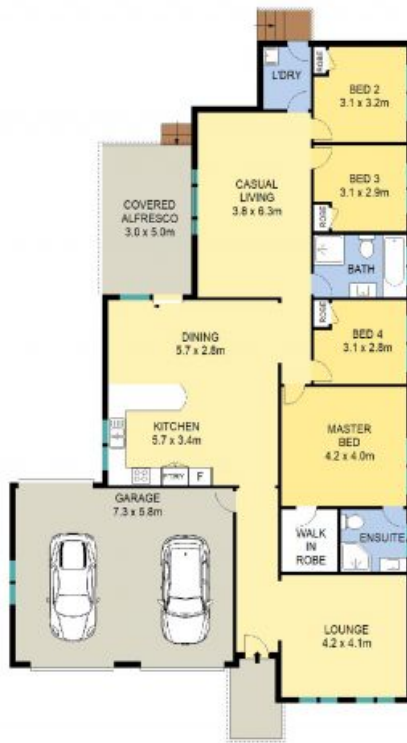
- Four bedrooms with master offering ensuite and walk-in-robe
- Three further bedrooms with built-in wardrobes to all
- A beautiful raked ceiling opens up to a great kitchen with quality appliances
- A dedicated formal lounge/media room located to the front of the house
- Ducted air conditioning throughout the home
- Oversize double garage with internal access and drive through
- A Private backyard offers tiled undercover entertaining area

For more details please visit <https://www.gyproperty.com.au/7263321>



Anna Younan

0416 053 838



SITE PLAN (NOT TO SCALE)



Scale: in metres, indicative only. 0 1 2 3 4 5 6 7 8 9 10

All information contained herein is obtained from sources we believe to be accurate, we cannot guarantee its accuracy. Interested persons should make and rely on their own enquiries.

13 Gardiner Crescent, Elderslie



13 Gardiner Crescent, Elderslie, NSW

