



11 Hines Place MOUNT ANNAN, NSW



3



1



2

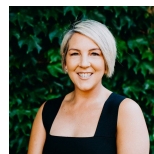
Large backyard in a quiet area

Located in a peaceful pocket of Mount Annan is this well presented 3 bedroom home. This residence offers open living and dining areas, plus a separate kitchen and internal laundry. Excellent outdoor areas ideal for entertaining guests that includes a large alfresco area plus a huge backyard that is very rare these days. Large double lock up garage and only moments away from Mount Annan High School.

Features include:

- 3 spacious bedrooms with built in wardrobes
- Large and bright open family room and meals area
- Separate kitchen plus dishwasher
- Floorboards throughout and air conditioning in time for summer
- Great size alfresco ideal for entertaining guests
- Huge backyard ideal for all occasions
- Large double lock up garage with rear access
- Minutes away from Botanic Gardens, schools and Mount Annan Shops
- Pets upon application

For more details please visit <https://www.gyproperty.com.au/7248943>



Tanya Gilbert

0499 250 804