



16 Golden Wattle Avenue Gregory Hills, NSW

4 2 2

Beautifully Presented Family Home

This beautifully presented home exudes quality and charm. Offering an excellent opportunity for a first home buyer and an astute investor. Located close to parks, reserves, and all the local shopping centres.

- Four bedrooms, master with ensuite and walk-in robe, built-in robes to rest
- Sleek kitchen with stone benchtops, stainless steel appliances and walk-in pantry
- Open plan living and dining area flows seamless into outdoor entertaining area
- Dedicated media room providing extra space for the family
- Double remote-control garage with internal access
- Ducted air conditioning and downlights to main living areas
- Beautifully landscaped front yard, backyard mainly laid to lawn
- An ideal first home or an investment property in a sought-after suburb

For more details please visit <https://www.gyproperty.com.au/7052511>



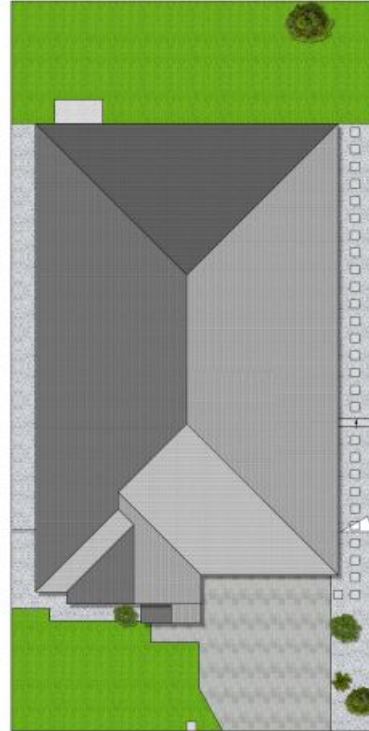
Anna Younan

0416 053 838



Gavin Maguire

0429 904 220



SITE PLAN (NOT TO SCALE)



Scale in metres, indicative only. All information contained herein is obtained from sources we believe to be accurate, we cannot guarantee its accuracy. Interested persons should make and rely on their own enquiries.

16 Golden Wattle Avenue, Gregory Hills



16 Golden Wattle Avenue, Gregory Hills, NSW

