



9 Cub Street Leppington, NSW



4



2



2

## Stunning home in the popular Willowdale Estate

This immaculately presented home is in the sought-after enclave of Willowdale Estate in Leppington, located close to popular schools and local shopping. This family home offers convenience and low maintenance lifestyle.

- Offering master bedroom with walk-in robe, generous ensuite
- Three additional bedrooms with generous storage
- Light filled living and dining area plus a dedicated media/lounge room
- Stylish kitchen with stone benchtops and walk-in pantry
- Well sized living and dining flows seamlessly to outdoors
- Ducted air conditioning, stunning family bathroom with freestanding bath
- Undercover outdoor entertaining area, low maintenance gardens
- Double remote control garage with internal access, wide entry with inset ceiling
- Walking distance to Denham Court primary and Willowdale shopping centre
- Short drive to the Leppington Train Station

For more details please visit <https://www.gyproperty.com.au/7040670>



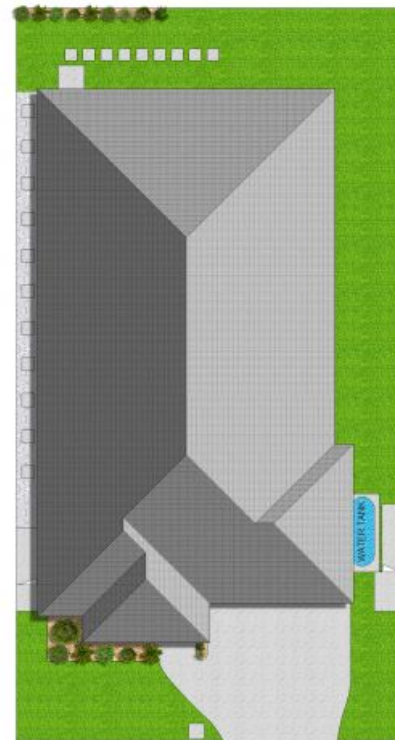
**Anna Younan**

0416 053 838



0 1 2 3 4 5 6 7 8 9 10  
SCALE (METRES)

Scale in metres, indicative only. All information contained herein is obtained from sources we believe to be accurate. We cannot guarantee its accuracy. Interested persons should make and rely on their own enquiries.



SITE PLAN (NOT TO SCALE)



9 Cub Street, Leppington



GILBERT + YOUNAN

9 Cub Street, Leppington, NSW

