



25 Canopy Crescent Wilton, NSW

4 2 2

Modern Family Home

This free-flowing floorplan sits on a generous 631sqm corner block, making this home the perfect for a growing family, investors and first home buyers. Located in Bingara Gorge, an exclusive estate where you can perfectly connect with the surrounds. With its beautiful tree-lined streets, spectacular backdrop of the mountain ranges, resort style facilities and a modern country feel, everything you need is at your doorstep.

- Four bedrooms with master bedroom offering ensuite and walk-in robe
- Three further bedrooms with built-in wardrobes to all
- Open plan living, incorporating large family and dining room areas
- Neat and tidy kitchen with gas cooking, stainless steel rangehood and dishwasher
- Family bathroom with double vanity and separate w/c
- Ducted air conditioning, generous 631sqm corner block
- Tiled undercover alfresco area overlooking generous backyard

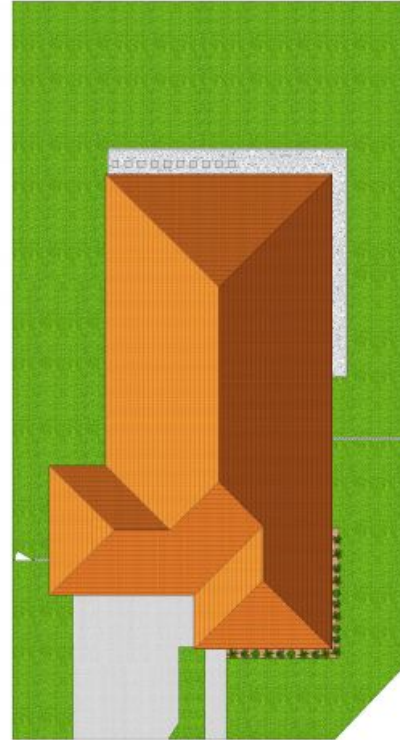
For more details please visit <https://www.gyproperty.com.au/6908826>

Water Rates: \$114.69 p/q



Anna Younan

0416 053 838



SITE PLAN (NOT TO SCALE)



Scale in metres. Indicative only. All information contained herein is obtained from sources we believe to be accurate. We cannot guarantee its accuracy. Interested persons should make and rely on their own enquiries.

25 Canopy Crescent, Wilton



25 Canopy Crescent, Wilton, NSW

