



23 Harley Street Yanderra, NSW



Impressively proportioned home occupying 1,714sqm block

Set back from the road and enveloped in magnificent established gardens and lawns, this neat and tidy Beechwood home sits on a 1,714sqm block. Large pergola to entertain, bio septic system with spray irrigation, 127,000 litre water tank and side access leading to a huge three bay 12 x 9 American barn style shed with fireplace and mezzanine. You will relish the lifestyle afforded you here as you benefit from the ultimate in privacy and convenience.

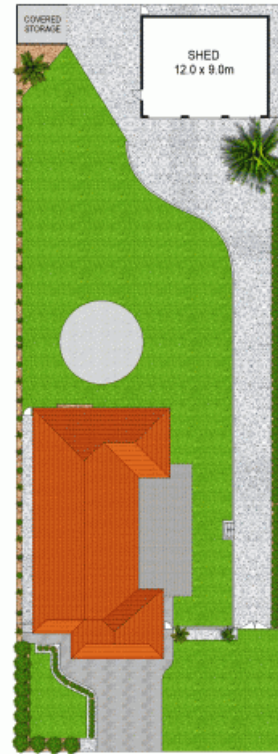
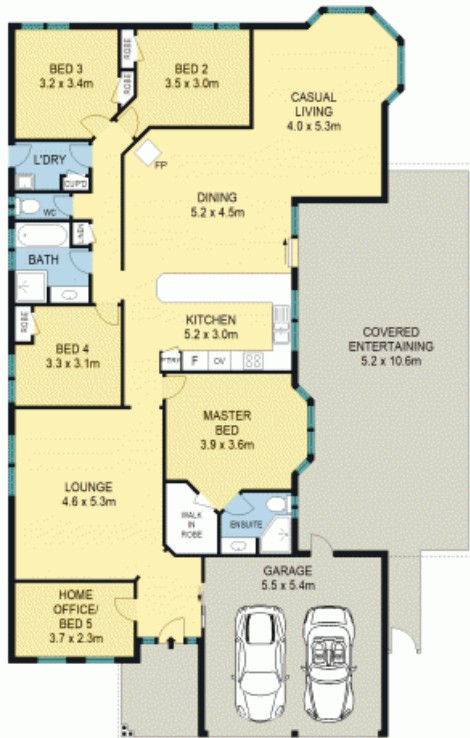
- Formal lounge and dining with a gorgeous combustion heating
- Centrally located kitchen with ample storage and dishwasher
- Additional living spaces offer versatility, style and ample room for families
- Five bedrooms include a master with ensuite and walk-in robe
- Neatly presented main bathroom and w/c, well placed internal laundry

For more details please visit <https://www.gyproperty.com.au/6828844>



Anna Younan

0416 053 838

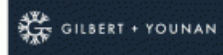


SITE PLAN (NOT TO SCALE)

Scale in metres. Indicative only.

All information contained herein is obtained from sources we believe to be accurate. We cannot guarantee its accuracy. Interested persons should make and rely on their own enquiries.

23 Harley Street, Yanderra



23 Harley Street, Yanderra, NSW

