



18 Rosecomb Road Spring Farm, NSW



4



2



2

### A fantastic contemporary home with Lifestyle & Location

This single level contemporary home ensures stylish family living over a 390sqm parcel of land. Located in the "Riverside Estate" of Spring Farm a popular enclave with close proximity to Camden and Elderslie. Walking distance to Springs Lake and a dog park and close proximity to schools and shopping.

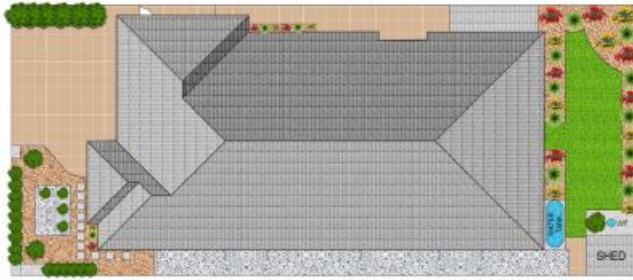
- Open plan kitchen with laminate benchtops and quality appliances
- Dishwasher, microwave, 900mm cooker and rangehood
- Master bedroom with ensuite and walk-in robe
- Modern main bathroom, three further bedrooms with built-in robes to two
- Living room and meals area, separate media room with fireplace
- Undercover entertaining area overlooking low maintenance yard
- Two split system air conditioning, ceiling fans in bedroom

For more details please visit <https://www.gyproperty.com.au/6678084>



**Anna Younan**

0416 053 838



SITE PLAN (NOT TO SCALE)



Scale in metres. Indicative only. All information contained herein is obtained from sources we believe to be accurate, we cannot guarantee its accuracy. Interested persons should make and rely on their own enquiries.

18 Rosecomb Road, Spring Farm



18 Rosecomb Road, Spring Farm, NSW

