

23 Nicholson Parade SPRING FARM, NSW



4 bedroom home in great location

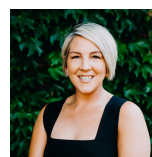
Please be advised due to COVID-19 guidelines, we are not permitted to conduct any open homes. Our process for inspections will be as follows;

- 1. Firstly make your application online for this property through T-App by entering the following link into your web browser -

www.t-app.com.au/gilbertyounan

(Please complete one application per adult with supporting documentation and please note that we do not accept 1form applications, please do not apply this way.)

If you have any questions prior to submitting an application, please call me 0499 250 804



Tanya Gilbert

0499 250 804

With easy access to Camden / Narellan bypass,

For more details please visit <https://www.gyproperty.com.au/6635489>

www.gyproperty.com.au

PH: 02 4648 4058 | FAX: 02 4648 4059

1/125 Argyle Street, Camden, NSW 2570