



177B Camden Road DOUGLAS PARK, NSW

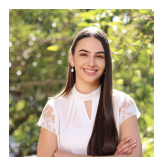


One bedroom granny flat with carport

Located in Douglas Park and just a short stroll to the train station, this spacious 1 bedroom granny flat could be just what you have been searching for. Affordable living, offering a good sized kitchen with plenty of cupboard storage, open plan lounge combined dining room. Good sized bedroom with ceiling fan and new split system air conditioner, walk in robe and ensuite bathroom. The home also offers an easy to maintain yard with washing line, it's own separate laundry and a lock up carport for secure parking.

Your touch of paradise, within waking distance to the train station which will have you at Campbelltown in 10 - 15 minutes.

For more details please visit <https://www.gyproperty.com.au/6365600>



Emily Fenech

0401 287 878