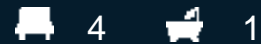




177 Camden Road DOUGLAS PARK, NSW



Walking distance to the train station

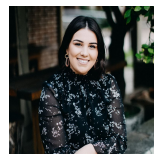
*** URGENT NOTICE COVID-19**

G+Y COVID-19 Policy. We ask that you register prior to attending the open home, if you do not register we will not be able to allow you to inspect. We have capped open home numbers and if we have reached the maximum registered number of clients allowed to inspect, the system will not allow you to register so please make contact with our office on 4648 4058.

We ask that you wear a mask during your inspection at all times. If you do not wear a mask, we will not allow entry to inspect. We request that you sanitise before entering the home and we have sanitiser provided upon entry for your use.

Gilbert + Younan thank you respecting our policies and for helping us to respect and keep our community safe.

Set in a quiet rural town, within walking distance to the train station and close proximity to the local primary school, this home is sure to attract you with it's features. Four good sized bedrooms, lounge room with slow combustion fireplace and a separate dining room. Centrally located kitchen looking out to the



Olivia Younan

0499 691 767