



12 Dore Place MOUNT ANNAN, NSW



Bright Spacious and Attractive

Superbly located is this superb 4 bedroom home.

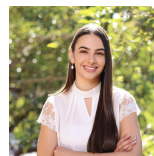
Boasting formal living and dining areas, this residence freely flows through to a large open plan gourmet kitchen with additional living and dining areas. All four bedrooms have built in wardrobes while the main has an ensuite. There is ducted air conditioning throughout the home, while outside there is a large outdoor covered pergola area and spacious backyard which is ideal for entertaining.

Set high with plenty of light, this grand home will appeal to all giving plenty of options for you to set out your own design.

Placed in a peaceful cul-de-sac, it is only moments away from Mount Annan Marketplace, schools, parks and the ever popular Botanic Gardens. Features include:

- Four great sized bedrooms with built-ins wardrobes
- Main bedroom with large walk-in robe and ensuite.

For more details please visit <https://www.gyproperty.com.au/6000147>



Emily Fenech

0401 287 878



SITE PLAN (NOT TO SCALE)



Scale in metres. Indicative only. Dimensions are approximate. All information contained herein is gathered from sources we believe to be reliable. However we cannot guarantee its accuracy and interested persons should rely on their own enquiries.

12 Dore Place, Mount Annan

