



52 Rosella Circuit GREGORY HILLS, NSW

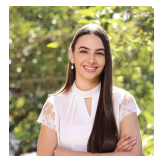


Great Location

Make the move and inspect this 3 bedroom home. Located in an ever growing popular suburb, this residence is only moments away from Bars, restaurants, parks and transport. With the new Gregory Hills shopping centre close by, parks for the kids, the home Offers a bright, open plan living area, deluxe quality bathrooms and a striking kitchen, your decision will be made easy.

Features:

- Main bedroom with walk in robe and ensuite
- Three great size bedrooms with built in wardrobes
- Large open plan living and dining areas flowing to back yard
- Stylishly appointed kitchen with stainless steel appliances
- Low maintenance gardens with ideal size yard
- Split system air conditioner
- Remote controlled lock up garage with internal access



Emily Fenech

0401 287 878

For more details please visit <https://www.gyproperty.com.au/5891912>