



2104/100 Castlereagh Street Liverpool, NSW



Prestigious living in the heart of Liverpool

Redefining urban living, this prestigious new residence offers a truly remarkable lifestyle with convenience in mind. Immaculately presented throughout, this 21st floor apartment accommodates a lifestyle of low maintenance comfort and ultra-convenience. It's positioned within a popular complex, footsteps from Liverpool's shopping centres, train station and parklands.

- Seamless lounge/dining area features contemporary finishes
- Easy flow through sliding glass stacker doors to good sized balcony with expansive views of Liverpool CBD
- Modern kitchen with premium appliances offers plenty of cabinet storage
- Two bedrooms with carpet flooring and built-in robes
- Sleekly appointed bathrooms and European style laundry
- Separate study and air conditioning
- Near Liverpool Plaza, Westfield Liverpool and Universities

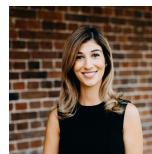
G+Y COVID-19 Policy. We ask that you register

For more details please visit <https://www.gyproperty.com.au/5629585>

www.gyproperty.com.au

PH: 02 4648 4058 | FAX: 02 4648 4059

1/125 Argyle Street, Camden, NSW 2570



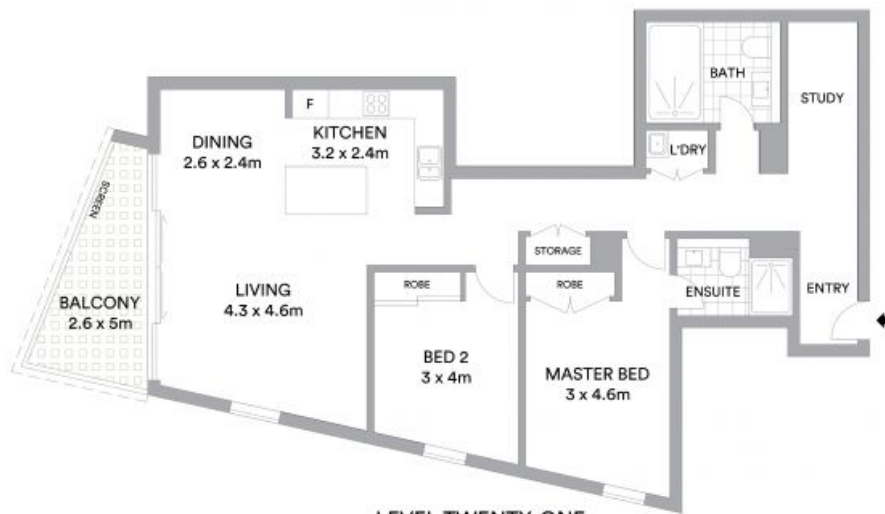
Joanna Younan

0438 829 790

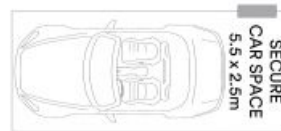


Anna Younan

0416 053 838



LEVEL TWENTY-ONE



BASEMENT TWO



Scale in metres. Indicative only. All information contained herein is obtained from sources we believe to be accurate. We cannot guarantee its accuracy. Interested persons should make and rely on their own enquiries.

