



2 Crase Place Grasmere, NSW



### Grand contemporary family home on 3,040sqm block

The ultimate in contemporary design on a grand scale is this master built family home. Nestled on an elevated parcel of 3,040sqm in a quiet cul-de-sac. Dappled with natural light and showcasing a selection of expansive living areas that lead out to a covered alfresco and stunning solar heated swimming pool.

- Five double sized bedrooms with personal storage to all
- Spacious master retreat with walk-in robe and ensuite
- Gourmet stone kitchen, walk-in pantry and integrated appliances
- Generous flowing layout, built-in home office, upstairs rumpus
- Fully equipped nine seater cinema, separate games room
- Open plan living and dining lead through bi-fold doors
- Stunning solar heated salt water pool, covered alfresco
- Ducted air, plantation shutters and video security
- Generous four car remote garage, abundant storage

For more details please visit <https://www.gyproperty.com.au/5577363>



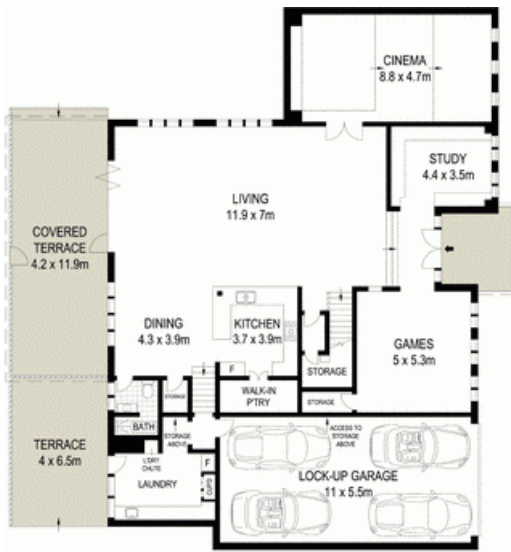
**Luke Mannion**

0428 473 629



**Luke Mannion**

0428 473 629



GROUND FLOOR



FIRST FLOOR



SITE PLAN (NOT TO SCALE)

0 2 4 6 8 10



Scale in metres. Indicative only. Dimensions are approximate. All information contained herein is gathered from sources we believe to be reliable. However we cannot guarantee its accuracy and interested persons should rely on their own enquiries

2 Crase Place, Grasmere

McGrath

