



32 Castlereagh Street Tahmoor, NSW



### Stunning home on 1,027sqm block

A grand statement of style and sophistication, spread across two separate dwellings and over a majestic quarter acre parcel that's perfectly positioned just a short stroll to all amenities. Consisting of a private setting with manicured landscapes, this stunning property is a picture perfect residence that boast grand proportions and designer living with charm.

- Stunning street appeal with immaculate presentation throughout
- Formal lounge and dining rooms create a grand statement of luxury
- Modern kitchen to main home, plus kitchenette in guest quarters
- Three bedrooms in the main residence, dressing room to master
- Large living area in the separate flat plus a large master bedroom
- Breathtaking gardens, options of separate yards for each dwelling
- Side access, perfect for a boat/caravan leading to a large carport
- Perfectly located within walking distance to Tahmoor train station
- Short stroll to local schools, cafes, restaurants and Town Centre

For more details please visit <https://www.gyproperty.com.au/5577331>



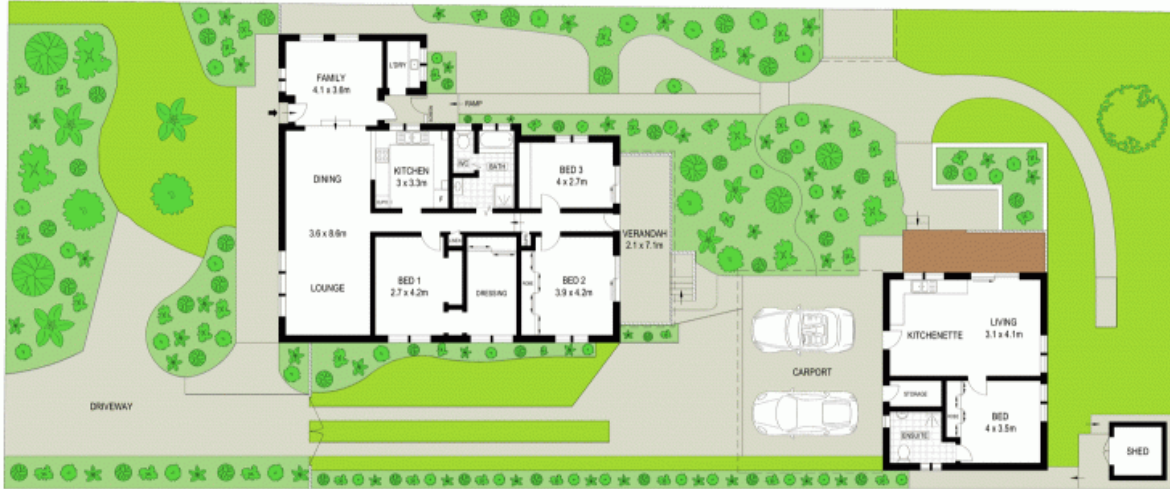
Anna Younan

0416 053 838



Anna Younan

0416 053 838



**McGrath**

Scale in metres. Indicative only. Dimensions are approximate. All information contained herein is gathered from sources we believe to be reliable. However we cannot guarantee its accuracy and interested persons should rely on their own enquiries

32 Castlereagh Street, Tahmoor, NSW

