



92 Minorca Circuit Spring Farm, NSW



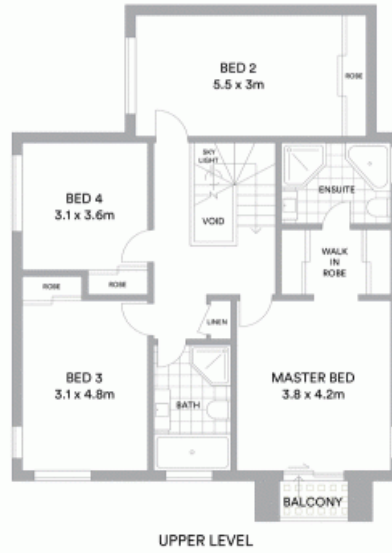
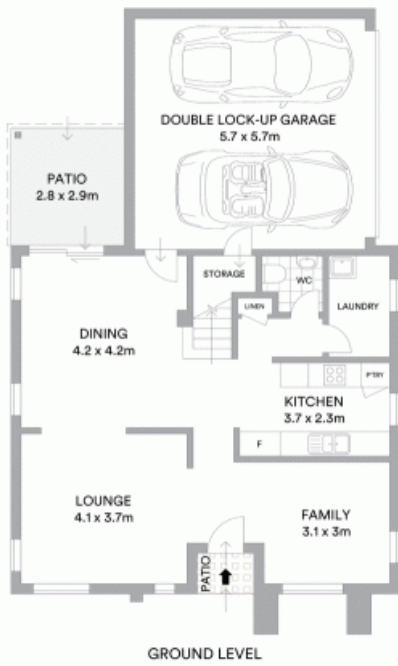
### Located in the popular Spring Farm

This immaculate double story home, is positioned in a great section of Spring Farm close to all access points to the Camden and Narellan shopping, restaurant and cafe precinct. With multiple living and dining areas downstairs, it is matched upstairs with four well-proportioned bedrooms.

- Great sized child friendly lawn with alfresco
- Ensuite and huge walk-in wardrobe to main bedroom
- Oversized bedrooms with built-in wardrobes
- Flowing floor plan with multiple living and dining areas
- Large double lock up garage
- Split system air conditioning to cool downstairs
- Minutes from the new Spring Farm Woolworths
- Private and well-presented street
- Well-manicured front and rear gardens
- Large windows bathing the home in natural light

For more details please visit <https://www.gyproperty.com.au/5577290>

**Gilbert + Younan Sales**



Internal 197sqm  
External 269sqm

**McGrath**

Scale in metres. Indicative only. All information contained herein is obtained from sources we believe to be accurate. We cannot guarantee its accuracy. Interested persons should make and rely on their own enquiries

