



33 Tarrawarra Avenue Gledswood Hills, NSW



Architecturally designed home with stylish interiors

Enviably located within 'The Hermitage Estate', this architecturally designed ex-display Shawood home is defined by its stylish interiors and contemporary inclusions. A fabulous four bedroom family home that provides a convenient location and a relaxed lifestyle.

- Boasting a contemporary design with ample natural light
- Chef's kitchen with built-in pantry and breakfast bench
- Integrated open plan living and dining space, study nook
- Seamless flow out to relaxed lawn area, fully fenced yard
- Four impressive bedrooms, each fitted with built-in wardrobes
- Spacious master bedroom boasts walk-in robe and ensuite
- Upper level lounge retreat, ducted air, video intercom and alarm
- Double remote lock-up garage with internal access, water tank
- Footsteps to grassy play grounds and the Country Club
- Set in a desirable community enclave, moments to all amenities

For more details please visit <https://www.gyproperty.com.au/5577222>



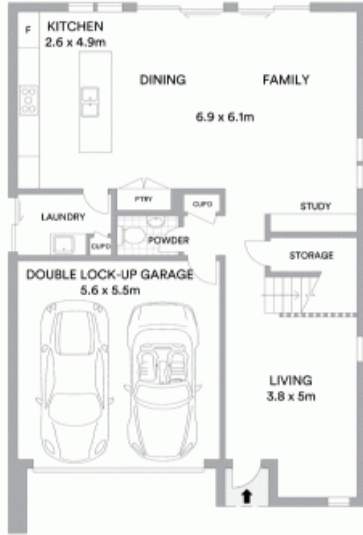
Luke Mannion

0428 473 629

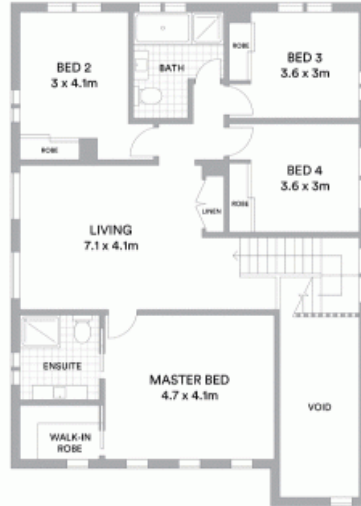


Luke Mannion

0428 473 629



GROUND FLOOR



FIRST FLOOR



Tarrawarra Avenue



McGrath

Scale in metres. Indicative only. All information contained herein is obtained from sources we believe to be accurate. We cannot guarantee its accuracy. Interested persons should make and rely on their own enquiries

