



16 Oates Street Spring Farm, NSW



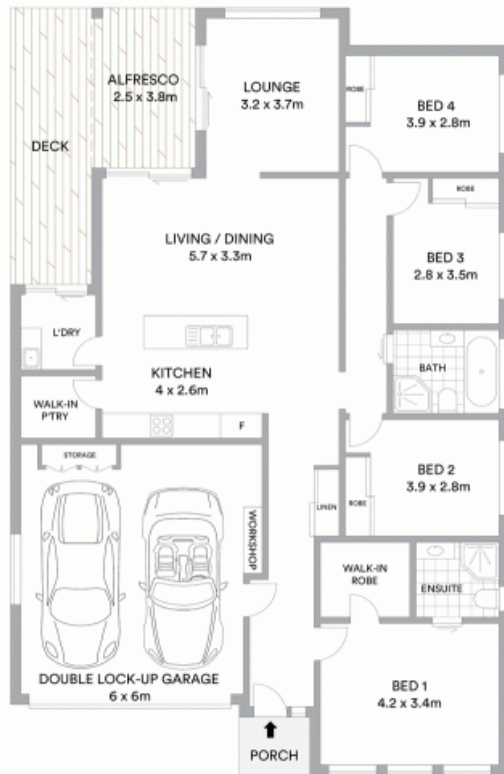
## Sophisticated, Sleek and Stylish

This meticulously presented residence defines contemporary living, constructed to suit the entertainer with flowing living spaces and custom features throughout. Peacefully perched on a manicured low maintenance yard and only minutes to all major amenities.

- This young residence is built by Nu-Era Homes
- Modern facade with attractive street appeal
- Open plan living spaces spilling into an entertainers yard
- Kitchen with stone, upgraded appliances and walk in pantry
- Light filled master bedroom featuring walk in and ensuite
- Additional three generously sized carpeted bedrooms
- Oversized main bathroom showcasing upgrades throughout
- Includes ducted air, sensor internal lighting and work bench
- Customised outdoor space boasting decking and bench feature
- Only minutes to public transport, local shops and schools

For more details please visit <https://www.gyproperty.com.au/5576014>

**Gilbert + Younan Sales**



McGrath

Scale in metres. Indicative only. All information contained herein is obtained from sources we believe to be accurate. We cannot guarantee its accuracy. Interested persons should make and rely on their own enquiries

