



2/12-14 Rudd Road Leumeah, NSW

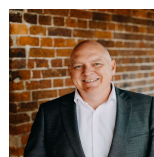


Convenient location

Conveniently positioned close to all amenities, this dual level residence is in near new condition. Set within a complex of five, this home provides a great opportunity for first home buyers, downsizers or investors.

- Four upper level bedrooms
- Ensuite, walk-in robe and balcony to master bedroom
- Open plan living and dining room upon entry
- Modern gas kitchen with stainless steel appliances
- Downstairs powder room, internal laundry
- Ducted air conditioning, natural gas and NBN
- Covered alfresco entertaining area
- Secure fully fenced rear yard
- Detached double lock-up garage, remote access
- Footsteps to Leumeah train station, schools and shops

For more details please visit <https://www.gyproperty.com.au/5377770>

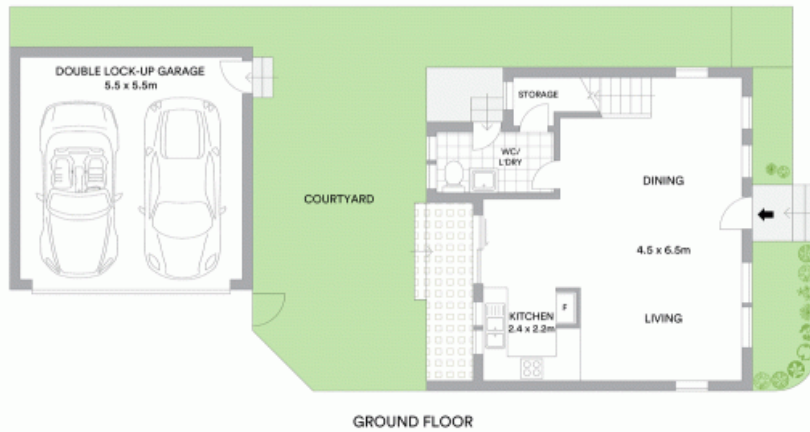


Luke Mannion

0428 473 629

Luke Mannion

0428 473 629



McGrath

Scale in metres. Indicative only. All information contained herein is obtained from sources we believe to be accurate. We cannot guarantee its accuracy. Interested persons should make and rely on their own enquiries

