

1 Peregrine Street Gledswood Hills, NSW

4 2 2

Expertly designed and crafted

This flawless four bedroom family home, expertly designed and crafted by SHAWOOD Homes it is set over two expansive levels and offers immaculately designed open plan interiors that are complimented by wonderfully private rear courtyard and garden.

- Beyond the grand solid entry door is a true family haven
- Principal suite with walk-in robe, ensuite and balcony
- Stunning oversized living room boasts double height ceiling
- Open plan kitchen, walk-in pantry and adjoining study nook
- Designated dining space allows for easy transition outdoors
- Complimented by natural timber and stone features
- Seamless flow out to relaxed alfresco patio and lawn areas
- Technologically advanced home hub system throughout
- Wonderfully landscaped and private garden
- Close proximity to parks and cycleways

For more details please visit <https://www.gyproperty.com.au/5377697>



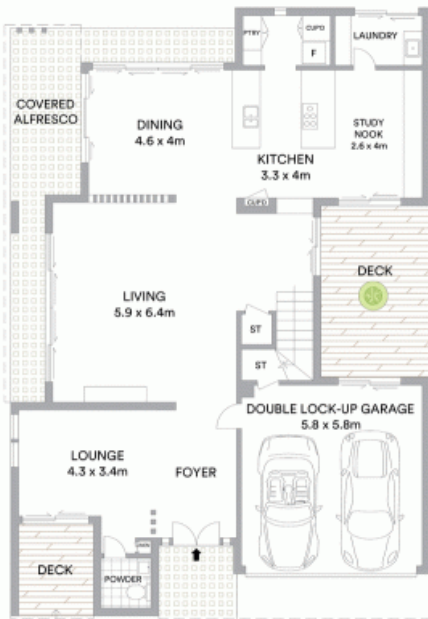
Luke Mannion

0428 473 629



Luke Mannion

0428 473 629



ENTRY LEVEL



UPPER LEVEL



McGrath

Scale in metres. Indicative only. All information contained herein is obtained from sources we believe to be accurate. We cannot guarantee its accuracy. Interested persons should make and rely on their own enquiries

