



29 Downes Crescent Currans Hill, NSW



3



1



1

Nest or Invest

An outstanding first home or investment opportunity, this three bedroom property offers a perfect entry level opportunity into the market. Positioned on an easy care 483sqm allotment in an established neighbourhood, this home provides convenient access to schools, shops and the M5 motorway.

- A unique concept of comfortable, low maintenance living
- Layout provides all the ease of a single level floorplan
- Occupying a spacious 483sqm parcel, fully fenced yard
- Three bedrooms all with personal storage
- Dining room adjoins functional kitchen views to the yard
- Covered outdoor entertaining space
- Single lock-up garage with drive through access
- Air conditioning, flyscreens and blinds throughout
- Close proximity to schools, shops and transport
- Easy access to the M5 motorway and Narellan Town Centre

For more details please visit <https://www.gyproperty.com.au/5367482>



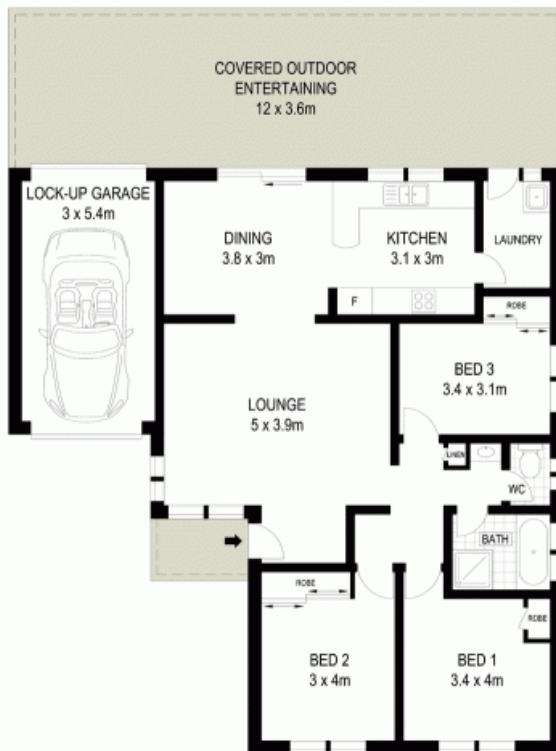
Luke Mannion

0428 473 629



Luke Mannion

0428 473 629



McGrath

Scale in metres. Indicative only. Dimensions are approximate. All information contained herein is gathered from sources we believe to be reliable. However we cannot guarantee its accuracy and interested persons should rely on their own enquiries

