



39 Peugeot Drive Ingleburn, NSW



3



2



2

Stunning home on 561sqm

Boasting welcoming warmth and effortless relaxation, this single level home reveals a comfortable lifestyle in a peaceful setting. Positioned on a 561sqm block of land within close proximity of local shops, Ingleburn RSL Club, local parklands/reserves.

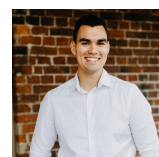
- Stunning street appeal and immaculate presentation throughout
- Cleverly designed floorplan with formal and informal areas
- Seamless outdoor flow to a large undercover entertaining area
- Sparkling in-ground swimming pool, sheds, side access
- Renovated gourmet kitchen with top-of-the-range appliances
- Smeg cooktop and oven, Bosch dishwasher, glass splashback
- Spacious master suite with ensuite and ample storage
- Impressively scaled bedrooms with ceiling fans
- Exquisite bathrooms, split system air conditioning, Plantation shutters
- Single-lock up garage with additional parking options

For more details please visit <https://www.gyproperty.com.au/5364219>



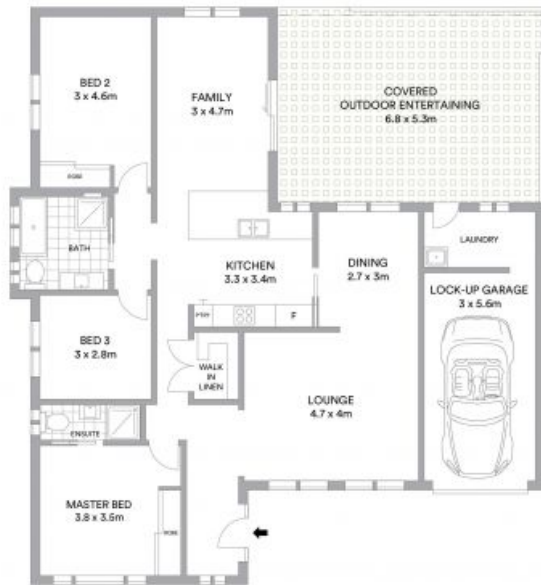
Anna Younan

0416 053 838



Michael Kay

0432 976 070



McGrath

Scale in metres. Indicative only. All information contained herein is obtained from sources we believe to be accurate. We cannot guarantee its accuracy. Interested persons should make and rely on their own enquiries

