



93 Junction Road Ruse, NSW

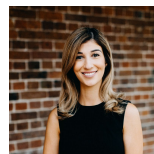


Perfect first home and investment opportunity

93 Junction Road, Ruse is a ready made prospect for first home buyers or a savvy investor. Recently renovated with a fresh coat of paint and brand new carpet, this is the hidden gem you've been looking for. Situated only minutes from local primary school and high school, it also has a supermarket close by and plenty of surrounding reserves for owners to enjoy.

- Open plan living in a single storey layout
- Plenty of natural light
- Four comfortable sized bedrooms
- Built in robes in three bedrooms
- A bathroom with separate toilet
- New carpet in living areas and bedrooms
- Tiles in kitchen and meals area
- Freshly painted
- 560m2 block
- Minutes from Ruse Public School and Leumeah

For more details please visit <https://www.gyproperty.com.au/5363762>



Joanna Younan

0438 829 790



Anna Younan

0416 053 838



Internal 103sqm
External 445sqm
Land area 560sqm



Scale in metres. Indicative only. All information contained herein is obtained from sources we believe to be accurate. We cannot guarantee its accuracy. Interested persons should make and rely on their own enquiries.

