



13 Rosina Avenue Harrington Park, NSW

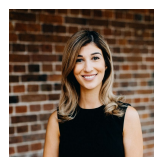


Large family home with swimming pool

Set in a peaceful locale, this generous dual level home is spread over an impressive 624sqm block. With a family friendly layout consisting of both formal and casual areas, this home is tastefully presented with neutral colour tones. Embraced by light filled interiors offering a residence of enormous and serene appeal.

- Stunning granite kitchen with 900mm gas oven and walk in pantry
- Four large bedrooms upstairs with a fifth bedroom downstairs
- Deluxe master suite with walk in robe and twin shower ensuite
- Media room completed with projector and wide screen
- Broad selection of formal and casual living
- Remote double garage, with drive through access
- Oversized covered alfresco area for year round entertaining
- Sparkling in ground fresh water solar heated swimming pool
- Well positioned in a family friendly location

For more details please visit <https://www.gyproperty.com.au/5363758>



Joanna Younan

0438 829 790



Anna Younan

0416 053 838



GROUND FLOOR



FIRST FLOOR

