



13 Rosina Avenue Harrington Park, NSW



Large family home with swimming pool

Set in a peaceful locale, this generous dual level home is spread over an impressive 624sqm block. With a family friendly layout consisting of both formal and casual areas, this home is tastefully presented with neutral colour tones. Embraced by light filled interiors offering a residence of enormous and serene appeal.

- Stunning granite kitchen with 900mm gas oven and walk in pantry
- Four large bedrooms upstairs with a fifth bedroom downstairs
- Deluxe master suite with walk in robe and twin shower ensuite
- Media room completed with projector and wide screen
- Broad selection of formal and casual living
- Remote double garage, with drive through access
- Oversized covered alfresco area for year round entertaining
- Sparkling in ground fresh water solar heated swimming pool
- Well positioned in a family friendly location

For more details please visit <https://www.gyproperty.com.au/5363758>

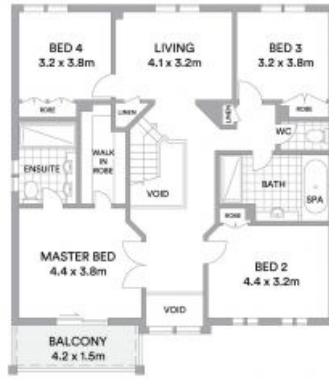


Anna Younan

0416 053 838



GROUND FLOOR



FIRST FLOOR



Scale in metres. Indicative only. All information contained herein is obtained from sources we believe to be accurate. We cannot guarantee its accuracy. Interested persons should make and rely on their own enquiries

