



1111A Werombi Road THERESA PARK, NSW



Large Two Bedroom Home

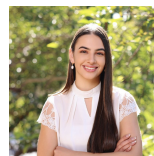
Set in tranquil surroundings and only a short drive to the ever growing and popular Cobbitty. It is also moments away from the agricultural branch of Sydney University.

This gorgeous 2 bedroom detached home is spacious and is generous in proportions.

Please note: two bedroom home is on the right hand side of facade photo.

Features Include:

- 2 spacious carpeted bedrooms both with built-ins
- Split system air conditioning in large combined living and dining
- Timber floor boards throughout living areas
- Stylish separate kitchen with stainless steel appliances
- Modern bathroom
- Large internal laundry with ample room for storage
- L-Shape Entertaining covered deck
- 1-2 Carspaces



Emily Fenech

0401 287 878



GROUND LEVEL



SITE PLAN (NOT TO SCALE)



Scale in metres. Indicative only. Dimensions are approximate. All information contained herein is gathered from sources we believe to be reliable. However we cannot guarantee its accuracy and interested persons should rely on their own en

1111 Werombi Road, Theresa Park

1111A Werombi Road, THERESA PARK, NSW

